

**GIPR Polyclonal Antibody**  
Catalog # AP70089**Specification**

---

**GIPR Polyclonal Antibody - Product Information**

Application	<b>WB, IHC-P, IF</b>
Primary Accession	<a href="#">P48546</a>
Reactivity	<b>Human</b>
Host	<b>Rabbit</b>
Clonality	<b>Polyclonal</b>

**GIPR Polyclonal Antibody - Additional Information****Gene ID** 2696**Other Names**

GIPR; Gastric inhibitory polypeptide receptor; GIP-R; Glucose-dependent insulinotropic polypeptide receptor

**Dilution**WB~~Western Blot: 1/500 - 1/2000. Immunohistochemistry: 1/100 - 1/300. Immunofluorescence: 1/200 - 1/1000. ELISA: 1/20000. Not yet tested in other applications.  
IHC-P~~N/A  
IF~~1:50~200**Format**

Liquid in PBS containing 50% glycerol, 0.5% BSA and 0.09% (W/V) sodium azide.

**Storage Conditions**

-20°C

**GIPR Polyclonal Antibody - Protein Information****Name** GIPR**Function**

This is a receptor for GIP. The activity of this receptor is mediated by G proteins which activate adenylyl cyclase.

**Cellular Location**

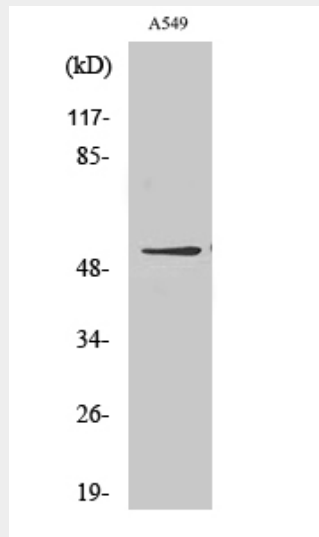
Cell membrane; Multi-pass membrane protein

**GIPR Polyclonal Antibody - Protocols**

Provided below are standard protocols that you may find useful for product applications.

- [Western Blot](#)
- [Blocking Peptides](#)
- [Dot Blot](#)
- [Immunohistochemistry](#)
- [Immunofluorescence](#)
- [Immunoprecipitation](#)
- [Flow Cytometry](#)
- [Cell Culture](#)

### GIPR Polyclonal Antibody - Images



Western Blot analysis of various cells using GIPR Polyclonal Antibody

### GIPR Polyclonal Antibody - Background

This is a receptor for GIP. The activity of this receptor is mediated by G proteins which activate adenylyl cyclase.